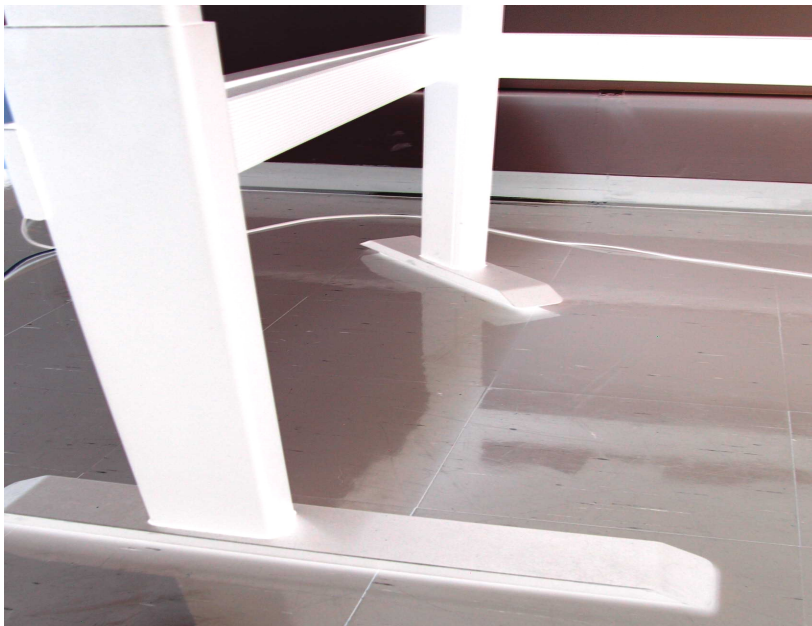


SHIFT

E6 INSTALLATION INSTRUCTIONS



Applicable bases:

- SB-E6-3-XXXX

Parts List:

1.	3X	SHIFT-PART-DL4-LEG	E6-Leg
2.	3X	SB-E6-FMP	Worksurface Bracket
3.	2X	SB-E6-FOOT24	Feet - 24"
4.	1X	SB-E6-FOOT18	Feet - 18"
5.	2X	SB-E5-CRCH-XX	Corner Cross Member (Channel/Cover/Wedge)
6.	1X	SP-DL42P-CB	Control Box
7.	1X	SHIFT-PART-POWERCORD	Control Box Power Cord
8.	3X	SHIFT-PART-MOTORCABLE	Actuator Cable
9.	1X	SHIFT-PART-SWITCHNOMEMORY	Actuator Control Switch
10.	6X		Cable Clip
11.	24X		Foot Screws (M6 machine screw)
12.	6X		Cross Member Screw (1/4-20 Button Head Screw)
13.	20X		Work Surface Screw (#10 Quad Pan Head Wood Screw)
14.	2X		Control Switch Screw (#6 Phillips Pan Head Wood Screw)
15.	6X		Cable Clip Screw (#8 Phillips Pan Head Wood Screw)

Component features:

- Strong 11GA steel construction.
- Precise electric height adjustable actuators (E6 base).

Assembly time (approx.):

- 8-15 minutes.

Tool(s) required:

- 5/32" hex-key
- 5mm hex-key
- Quad Head driver bit
- #2 Philips driver bit

Initializing Instructions:

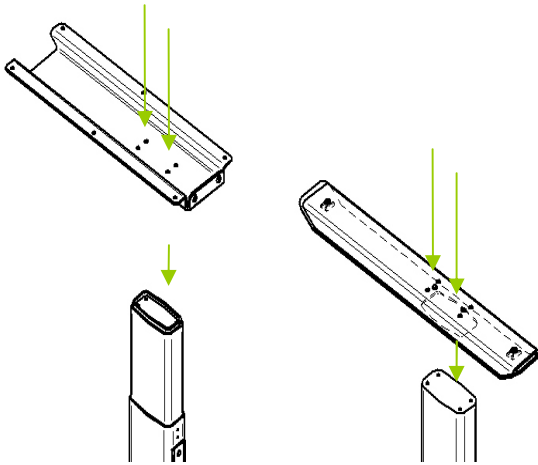
- 1- Ensure the table is positioned in its final location, the power cord is plugged in and all cables are firmly connected (switch to control box, actuator connect cables to control box and actuators and power cord to control box and wall outlet or power strip).
- 2- Press the down key once or twice and holding it until the legs into the end stop, it will then automatically run 5mm (.2in) out again. Do not release key until all movement has completely stopped.

Notes:

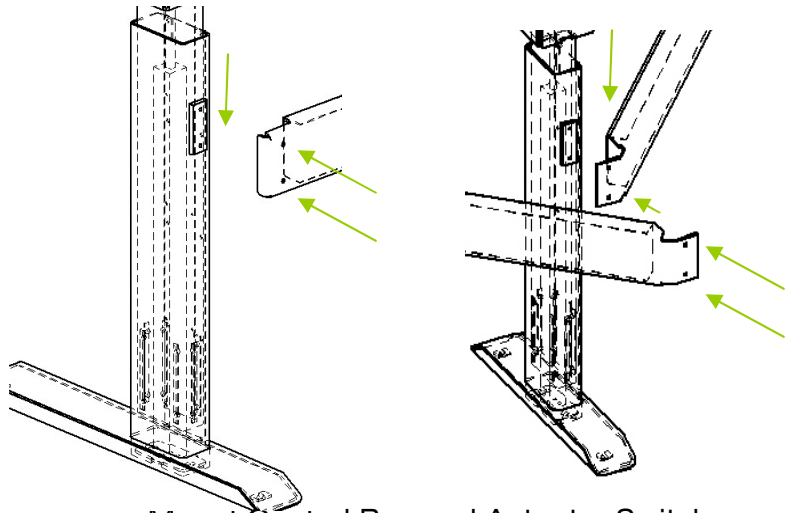
- a. If you release the down key before the sequence is completed the initialization must be repeated.
- b. If above initialization does not work press and hold both up and down keys for 20 seconds. Then repeat step 2.
- c. Unit may require re-initialization after a power interruption.

SHIFT

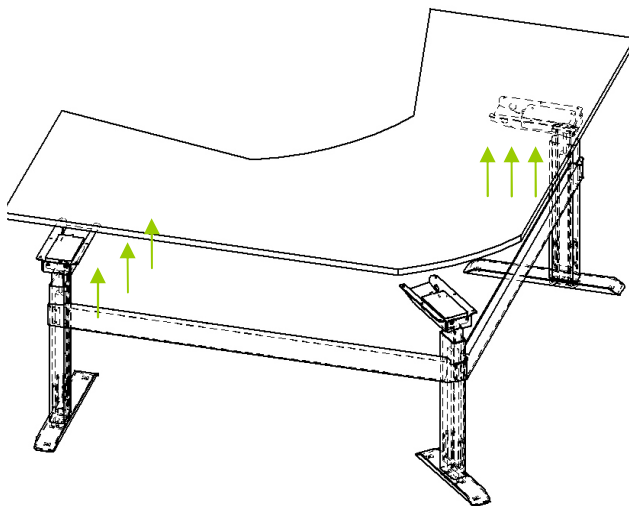
- 1-
Using 4 – M6 – screws fasten foot to leg and using 4 – M6 – screws fasten worksurface bracket to top of leg .



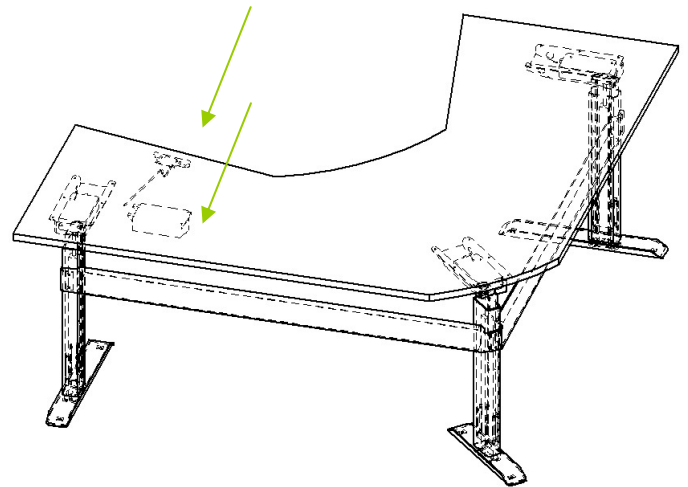
- 2-
Slide Wedge Plate into slot on leg.
Using 2 - 1/4" dia x .5" - screws fasten cross channel to leg.



- 3-
Using 4 – M6 – screws fasten Worksurface Bracket to top of leg.



- Mount Control Box and Actuator Switch to underside of worksurface in desired location.



- 5-
Attach Actuator, Switch and Power cables to control box. Secure excess cables using cable clips. Plug power in and Initialize (see Initializing instructions).